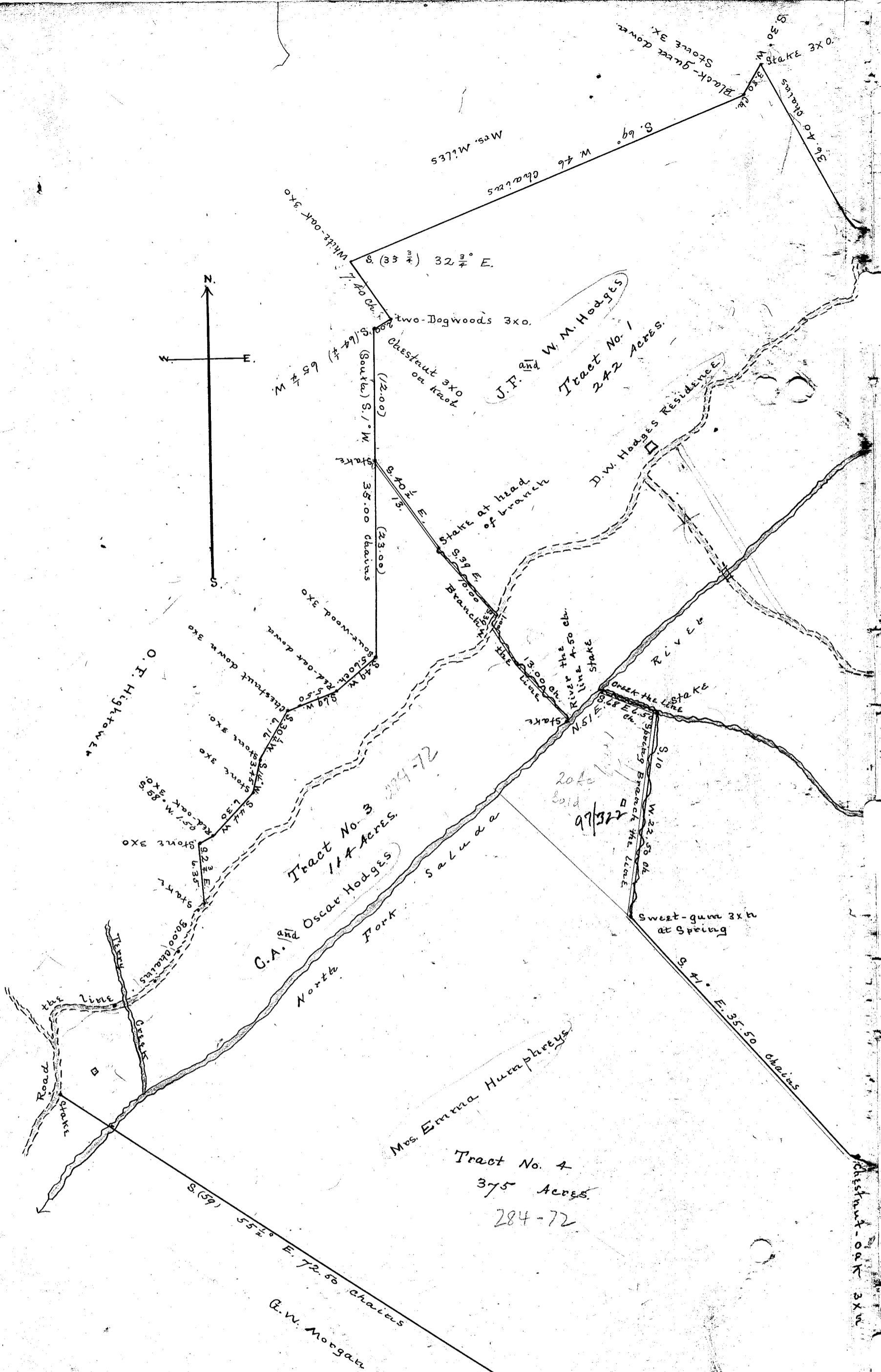


3
35
66
210
2310

14 prints



MAP
 Showing land of
 D.W. Hodges,
 lying on the North Fork of Saluda River,
 Greenville County, South Carolina.

Resurveyed Aug. 20, 1908.
 A.L. Hardin,
 Surveyor.

Recorded December 21st., 1909.
 and copied by J.B.-

Black Oak 3x
 not found
 Stone in Chestnut
 Stump